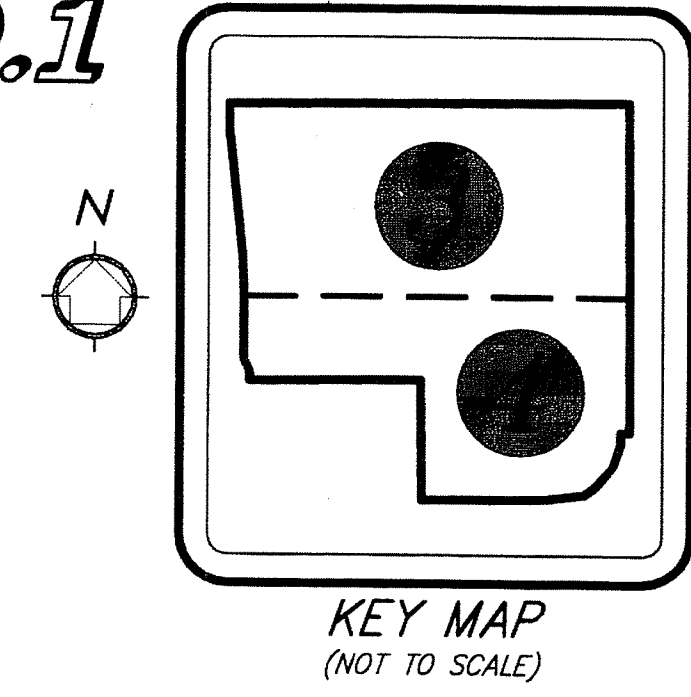
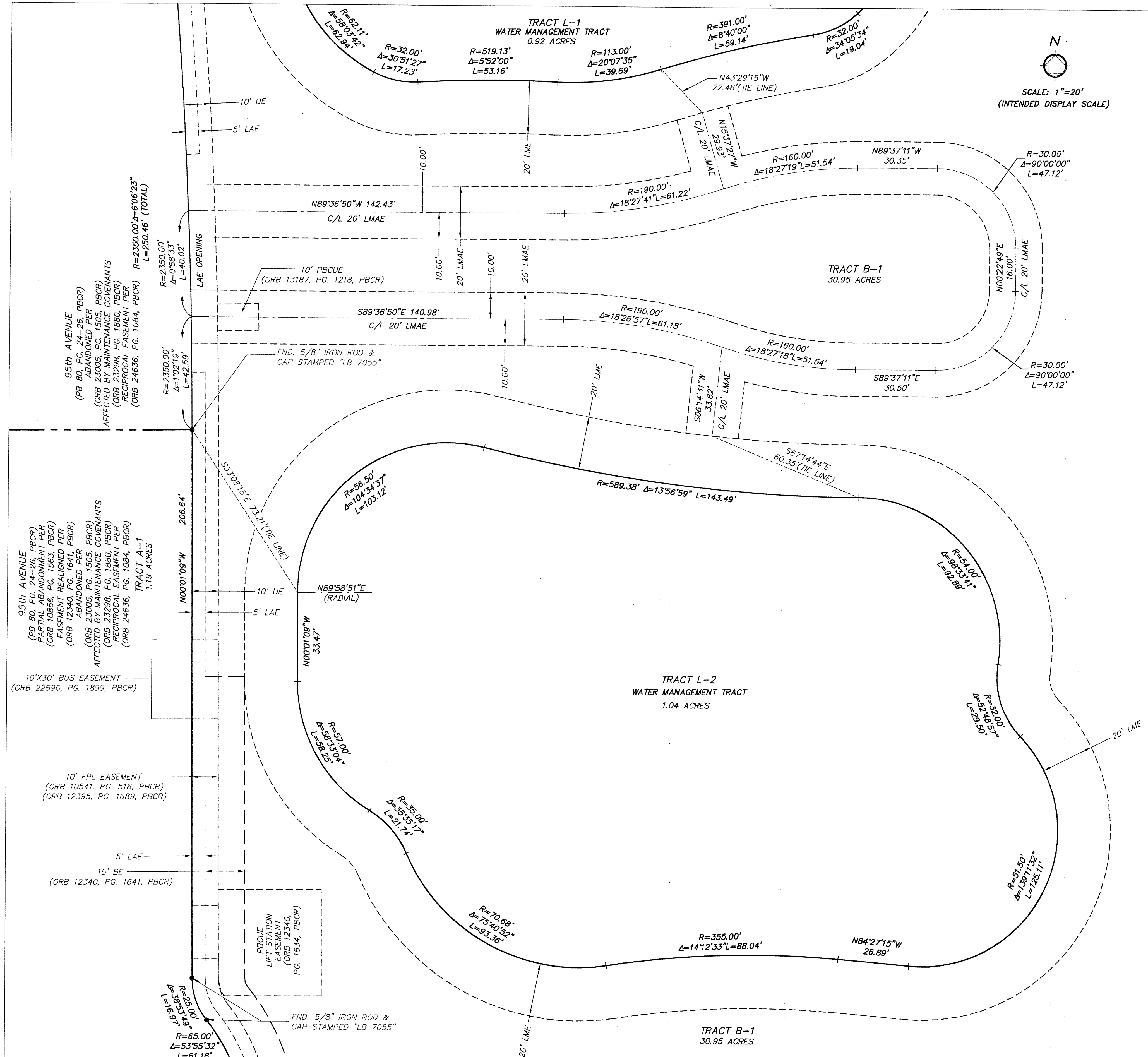


RAINBERRY P.U.D., PODS A, B, & C REPLAT NO.1

BEING A REPLAT OF POD B, RAINBERRY P.U.D. PODS A, B, & C, ACCORDING TO THE PLAT THEREOF, AS RECORDED IN PLAT BOOK 80, AT PAGE 24 THROUGH 26 INCLUSIVE, TOGETHER WITH A PORTION OF 95TH AVENUE AS SHOWN ON SAID PLAT, PARTIALLY ABANDONED PER OFFICIAL RECORDS BOOK 10856, AT PAGE 1563, REALIGNED PER OFFICIAL RECORDS 12340, AT PAGE 1641, ABANDONED PER OFFICIAL RECORDS BOOK 23005, AT PAGE 1505, AND BEING AFFECTED BY OFFICIAL RECORDS BOOK 23298, AT PAGE 1880, ALL BEING OF THE PUBLIC RECORDS OF PALM BEACH COUNTY, FLORIDA. SAID LANDS LYING AND SITUATE IN SECTION 19, TOWNSHIP 47 SOUTH, RANGE 42 EAST, PALM BEACH COUNTY, FLORIDA.

DETAIL "H"



20

State of Florida }
County of Palm Beach } SS

THIS PLAT WAS FILED FOR RECORD AT _____ M.

THIS _____ DAY OF _____ A.D. 2014 AND DULY RECORDED

IN PLAT BOOK _____ ON PAGES _____ THROUGH _____

SHARON R. BOCK
CLERK AND COMPTROLLER

BY: _____
DEPUTY CLERK

SHEET 7 OF 8 SHEETS

- LEGEND:**
- CB = CHORD BEARING
 - CD = CHORD DISTANCE
 - CCR = CERTIFIED CORNER RECORD
 - BE = BUFFER EASEMENT
 - CL = CENTER LINE
 - CONC. = CONCRETE
 - Δ = DELTA (CENTRAL ANGLE)
 - DE = DRAINAGE EASEMENT
 - FND. = FOUND
 - FPL = FLORIDA POWER & LIGHT
 - L = LENGTH OF ARC
 - LB = LICENSED BUSINESS
 - LAE = LIMITED ACCESS EASEMENT
 - LME = LAKE MAINTENANCE EASEMENT
 - LMAE = LAKE MAINTENANCE ACCESS EASEMENT
 - ORB = OFFICIAL RECORDS BOOK
 - PB = PLAT BOOK
 - PBCR = PALM BEACH COUNTY RECORDS
 - PBCDE = PALM BEACH COUNTY DRAINAGE EASEMENT
 - PBCUE = PALM BEACH COUNTY UTILITY EASEMENT
 - PG. = PAGE
 - PLS = PROFESSIONAL LAND SURVEYOR
 - PRM = PERMANENT REFERENCE MARKER
 - R/W = RIGHT-OF-WAY
 - R = RADIUS
 - UE = UTILITY EASEMENT
 - = SET 4"x4" CONCRETE (PRM) W/ALUMINUM DISC STAMPED "LB 7055 PRM" UNLESS OTHERWISE NOTED.
 - ⊙ = SET NAIL & BRASS DISC STAMPED "LB 7055 PRM" UNLESS OTHERWISE NOTED
 - ① = SHEET NUMBER
 - WC = WITNESS CORNER

NOTE:
THE UTILITY EASEMENT BEING REPLATTED AND SHOWN HEREON WAS PREVIOUSLY CREATED BY RAINBERRY P.U.D. PODS A, B, & C, PLAT BOOK 80, PAGE 24, PALM BEACH COUNTY RECORDS.

WGI
Wantman Group, Inc.

Engineering ♦ Planning ♦ Surveying ♦ Environmental

2035 VISTA PARKWAY, SUITE 100, WEST PALM BEACH, FL 33411
(888) 909-2220 phone (561) 887-1110 fax
CERTIFICATE OF AUTHORIZATION No. LB 7055
ORLANDO - PORT ST. LUCIE - TAMPA

THIS INSTRUMENT WAS PREPARED BY DEREK G. ZEMAN, P.S.M.
PROFESSIONAL SURVEYOR AND MAPPER, LICENSE NO. 5655
FOR THE FIRM: WANTMAN GROUP, INC.